

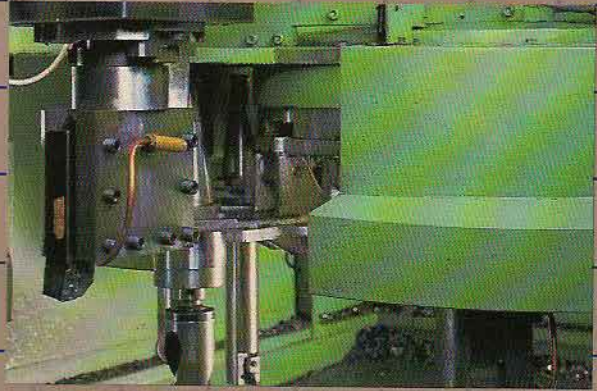
**VERTICAL TURNING LATHES**



**WICKMAN  
BENNETT**

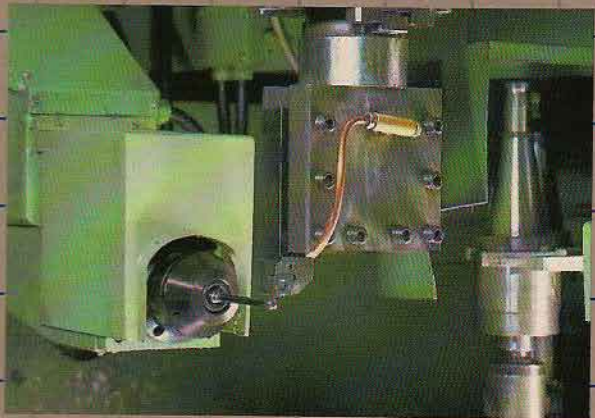
# WEBSTER BENNETT

'S' series is available with the option of turrets or automatic toolchanging with a storage capacity of 16 tools. Accurate location is maintained by a No. 50 I.S.O. taper or as an option No. 60 I.S.O. taper with 12 station tool magazine.

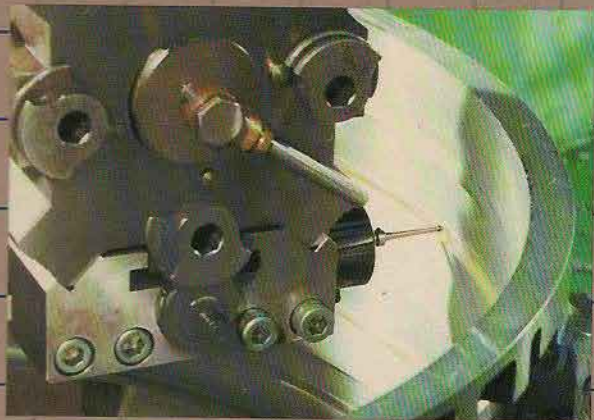


16 TOOL STATION MAGAZINE

Automatic tool monitoring and gauging probes. 'S' and 'TNC' series machines can be equipped with both tool and part gauging probes. The tool setting probes are programmed to gauge the tools and provide automatic setting of each tool offset, to correct for tool wear, tool insert tolerances and thermal effects ensuring optimum accuracy under production conditions.



TOOLSETTING/INSPECTION PROBE



IN-PROCESS GAUGING

Handling time can be substantially reduced with an optional pallet loading system.



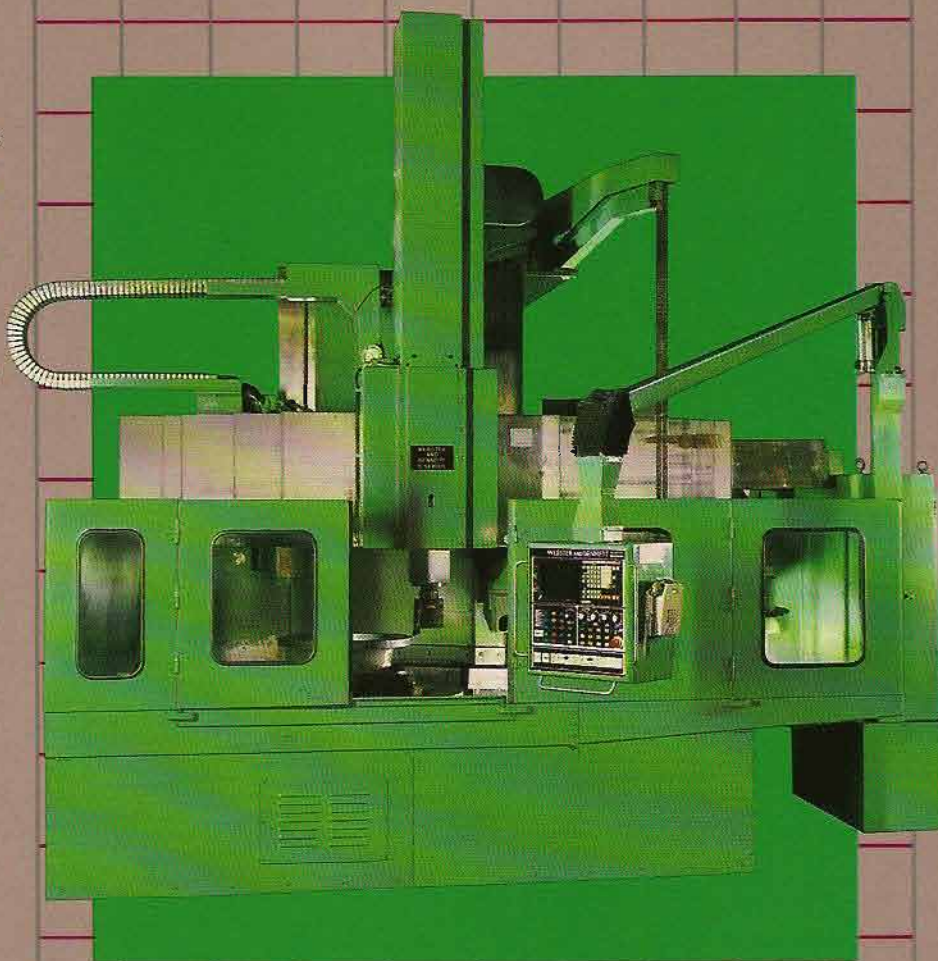
48" TNC WITH PALLET LOADING AND AUTOMATIC GAUGING

# WEBSTER BENNETT

The 'S' series is a sophisticated CNC vertical turning system of modular construction and advanced concept, offering an extensive range of precision engineered features and machine options. The Webster & Bennett machines will provide the rugged metal removal capacity and advanced design features that can make a valuable contribution to your machining operations.

## SALIENT FEATURES:

- Machine constructed of high grade iron, internally ribbed to absorb high cutting forces and give optimum rigidity and thermal stability.
- Hardened and ground precision steel guideways.
- Main drive through 2-speed gearbox with 75 hp (57 kW) dc motor. 100 hp (74 kW) optional.
- Heavy duty preloaded cross roller bearing for assured radial and axial accuracies.
- Adjustable cross slide for maximum versatility. Fixed cross slide optional.
- Automatic tool indexing via turrets or 16 station toolchanger.
- Long-life bearing arrangements combining auto-lubricated.
- Non-metallic load bearing surfaces and pre-loaded linear bearings on cross-slide.
- Precision hardened and ground recirculating ballscrews.



## 'S' SERIES

Table diameter	1000mm (39")	1250mm (49")	1600mm (63")	1800mm (71")	2000mm (79")
Swing diameter	1524mm (60")	1524mm (60")	2000mm (79")	2000mm (79")	2200mm (86")
Height beneath elevating cross slide	1600mm (63")	1600mm (63")	1600mm (63")	1600mm (63")	1600mm (63")
Cross slide adjustment	1000mm (39")	1000mm (39")	1000mm (39")	1000mm (39")	1000mm (39")
Max. height beneath: Turret slide	1930mm (76")	1930mm (76")	1930mm (76")	1930mm (76")	1930mm (76")
Turret slide vertical travel	950mm (37.40")	950mm (37.40")	950mm (37.40")	950mm (37.40")	950mm (37.40")
Machines with Automatic Toolchanger -					
Ram Travel	1250mm (48")	1250mm (48")	1250mm (48")	1250mm (48")	1250mm (48")
Max. height beneath: Ram slide	1854mm (73")	1854mm (73")	1854mm (73")	1854mm (73")	1854mm (73")
Main motor rating	75 hp (56 kW)	75 hp (56 kW)	75 hp (56 kW)	75 hp (56 kW)	75 hp (56 kW)
Table speed ranges	5-168	6.8-224	5-168	6.8-224	4-131
	9-300	12-400	9-300	12-400	7-233
					9.3-310
					7-233
					9.3-310
					5.7-190
					7.6-254
Feed range	0.01-200 inches per min.		(0.1-5000mm per min.)		
Rapid traverse	200 inches per min.		(5000mm per min.)		
Machine Weight (approx.)	47,300 lbs (21,500 kg)	48,000 lbs (21,800 kg)	55,000 lbs (25,000 kg)	56,100 lbs (25,500 kg)	60,500 lbs (27,500 kg)

VERTICAL TURNING LATHES

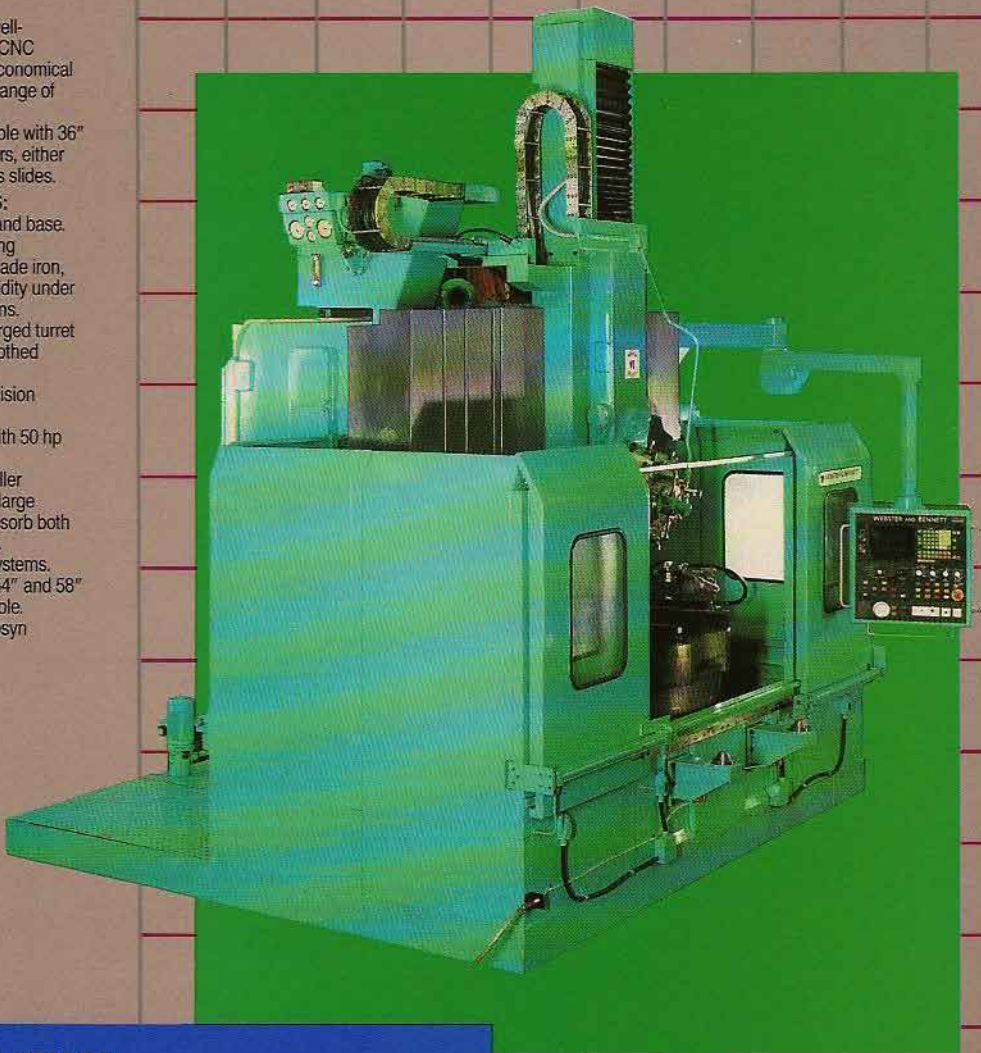
WICKMAN  
BENNETT

# WEBSTER BENNETT

The TNC Series is a well-established, compact CNC machine offering an economical way to handle a wide range of vertical turning work. The machine is available with 36" and 48" table diameters, either fixed or elevating cross slides.

## SALIENT FEATURES:

- Monobloc column and base. The single piece casting construction in high grade iron, ensures maximum rigidity under heavy cutting conditions.
- Pentagonal steel forged turret with precision multi-toothed coupling location.
- Hardened and precision ground guideways.
- 2-speed gearbox with 50 hp (37 kW) dc drive.
- Pre-loaded taper roller bearings mounted on large diameter spindle to absorb both radial and axial forces.
- Choice of control systems.
- The option of 42", 54" and 58" diameter tables available.
- Resolver or Inductosyn Feedback System.



## SERIES 'TNC'

Table diameter	36"	(914mm)	48"	(1219mm)
Swing diameter	46"	(1168mm)	59"	(1499mm)
Height beneath elevating cross slide	40"	(1016mm)	48"	(1219mm)
Cross slide adjustment	19"	(483mm)	24"	(610mm)
Max. height under turret	47"	(1194mm)	59"	(1499mm)
Vertical travel of turret slide	34"	(864mm)	38"	(965mm)
Motor Rating	50 hp	(37 kW)	50 hp	(37 kW)
Optional	75 hp	(56 kW)	75 hp	(56 kW)
Table speed ranges		7.4-266		5-250
		11-399		8.5-308
		13.6-489		9-325
		13.9-500		
Max. Weight (approx.)	19,040 lbs	(8,655 kg)	26,880 lbs	(12,218 kg)

# WEBSTER BENNETT

Wherever metal must be machined efficiently with great precision the Webster Bennett medium and heavy duty vertical turning lathes provide an outstandingly cost effective answer. With their many advanced construction features and operating advantages, this range of versatile machining systems employs the latest technology to ensure high performance and so meet the ever increasing need for greater productivity.

Over many years, Webster & Bennett machines have been supplied world-wide to companies actively engaged in: Aero-space, Petro-chemicals, Railways, Pumps & Compressors, Power Transmission, Marine Engines and Energy-related manufacturing industries.

## TYPICAL APPLICATIONS



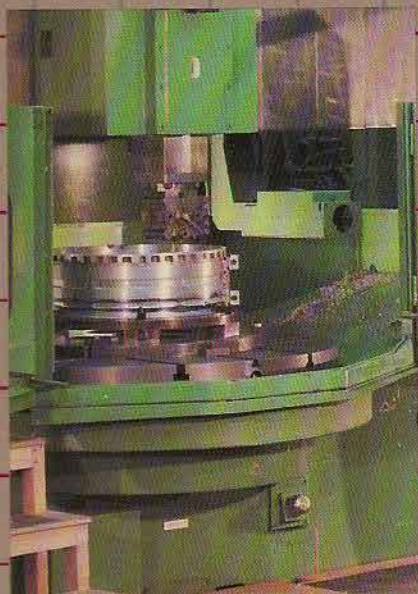
1,000mm Fixed Rail Series 'S' CNC machining Taper threads of 26" diameter rock bit for the oil industry.



1,250mm Elevating Rail Series 'S' CNC Machining valve body.



120" DCS CNC machining a pump component.



1,500mm Series 'S' with Ram Slide and Renishaw toolsetting probe machining compressor casings.

WEBSTER BENNETT

# SERIES 'S'



## VERTICAL TURNING CENTRES





**CONTROLS**  
Wickman Bennett can offer the most advanced operator orientated control systems available, integrated with the machines to provide comprehensive and reliable controls based on multi-microprocessor or computer electronics. The modular design of the controls enable the operator panels to be pendant mounted. Available from:  
FANUC  
SIEMENS  
ALLEN BRADLEY

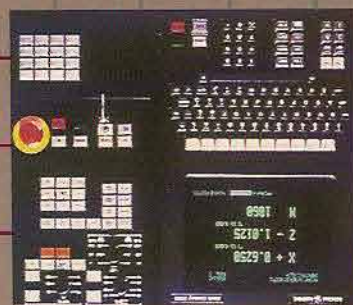
**TRAINING**

Prior to installation Wickman Bennett offer training in the following:  
Part Programming  
Mechanical maintenance  
Electrical/Electronic maintenance  
CNC Machine Operation

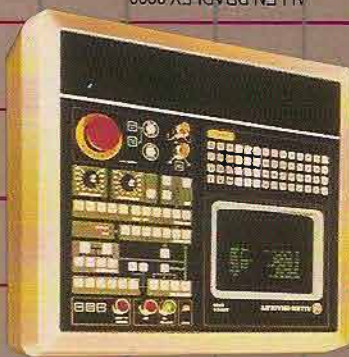
**AGENT**



FANUC/SIEMENS 6TB



G.E. 2000



ALLEN BRADLEY 8200



G.E. MARK CENTURY ONE WITH 'T' SERIES



Wickman-Bennett Machine Tool Co. Ltd was formed by its parent company Kelson (UK) Ltd in 1984, following the acquisition of Wickman Automatic Lathes and Webster and Bennett from the John Brown Group. The Wickman-Bennett and Kelson combined facility and management expertise, affords a unique opportunity to strengthen the operation and endorses Wickman-Bennett's determination to maintain their position among the world's leading machine tool makers.



We invite you to send details of your medium and heavy duty turning requirements to us when we shall be pleased to recommend the most suitable machine and submit production proposals based on the use of this versatile range.

Wickman Bennett Machine Tool Company Limited  
Banner Lane, Coventry CV4 9GE, England  
Telephone: (0203) 465231, Telex: 311941 WICBEN  
Head Office: Kelson (UK) Ltd, Engineering Division  
Dana Estate, Paddock Wood, Kent TN12 6UU  
Tel: Paddock Wood (089 283) 5555, Telex: 95197

We reserve the right to alter the specification of our machines without prior notice.